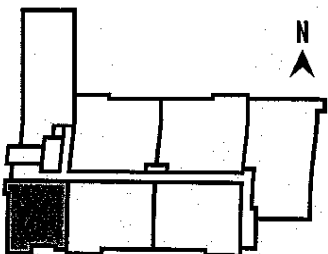
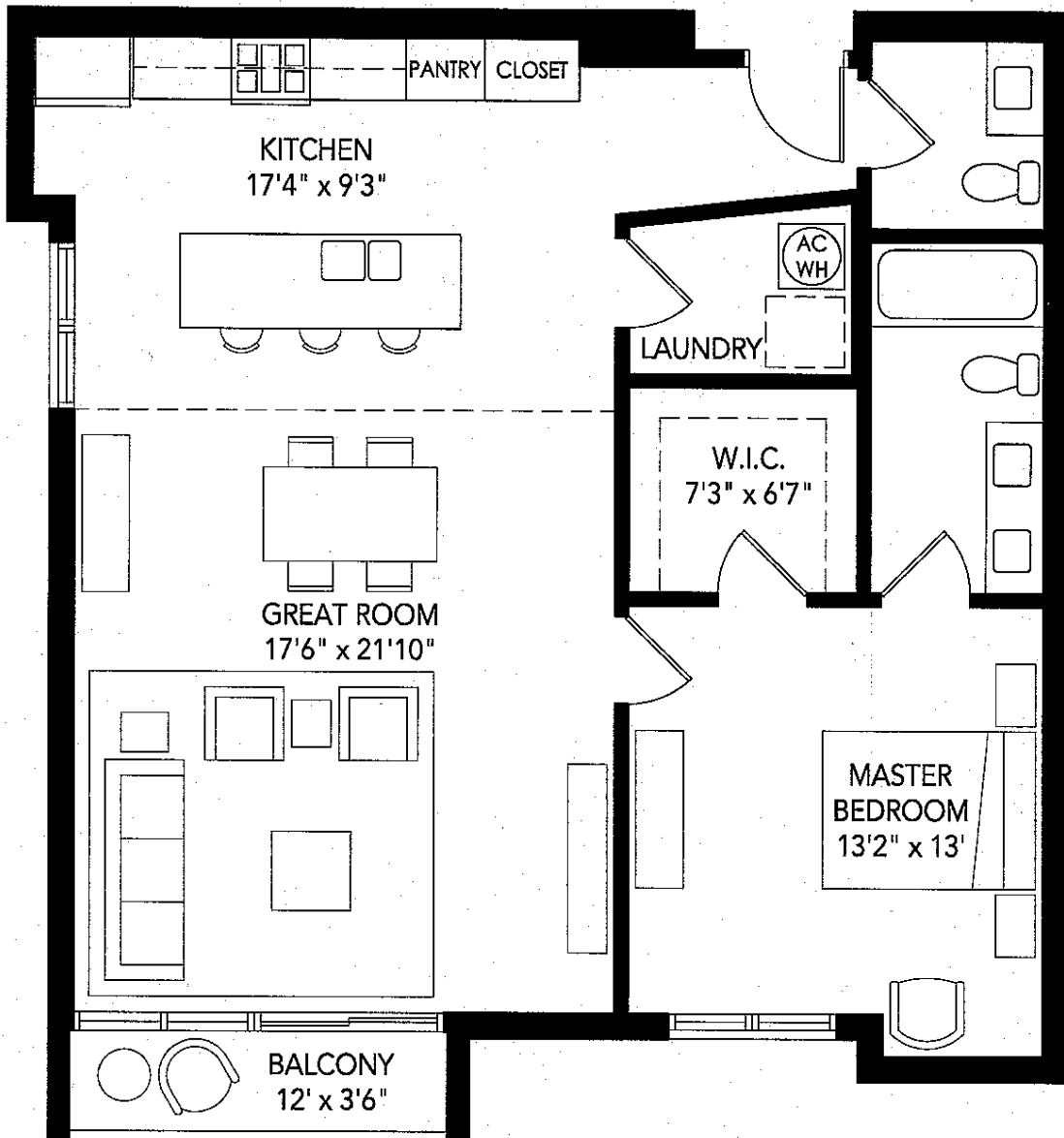


The
SALVADOR

FLOORPLAN A2

Interior: 964 SF
Balcony: 40 SF



ORAL REPRESENTATIONS CANNOT BE RELIED UPON AS CORRECTLY STATING REPRESENTATIONS OF THE DEVELOPER. FOR CORRECT REPRESENTATIONS, REFERENCE SHOULD BE MADE TO THIS BROCHURE AND TO THE DOCUMENTS REQUIRED BY FLORIDA STATUTE SECTION 718.503 TO BE FURNISHED BY THE DEVELOPER TO A BUYER OR LESSEE.

There are various methods for calculating the total square footage of a condominium unit, and depending on the method of calculation, the quoted square footage of a condominium unit may vary by more than a nominal amount. The total condominium unit square footages are shown in this brochure are based on the "Architectural Method" of measurement and the exterior perimeter measurements of the condominium unit, which include exterior walls, interior columns, fifty percent of demising walls. These square footage calculations are higher than the interior area space calculations for the condominium units. Please see the Declaration of Condominium for more information.

Smith &
Associates Real Estate